

# Binary fractionation of neoruscogenin and ruscogenin on Bench scale FCPC® equipped with 1L column

Kromaton application laboratory, Angers, France  
J.GLINSKY, Planta analytica, U.S.

## Introduction

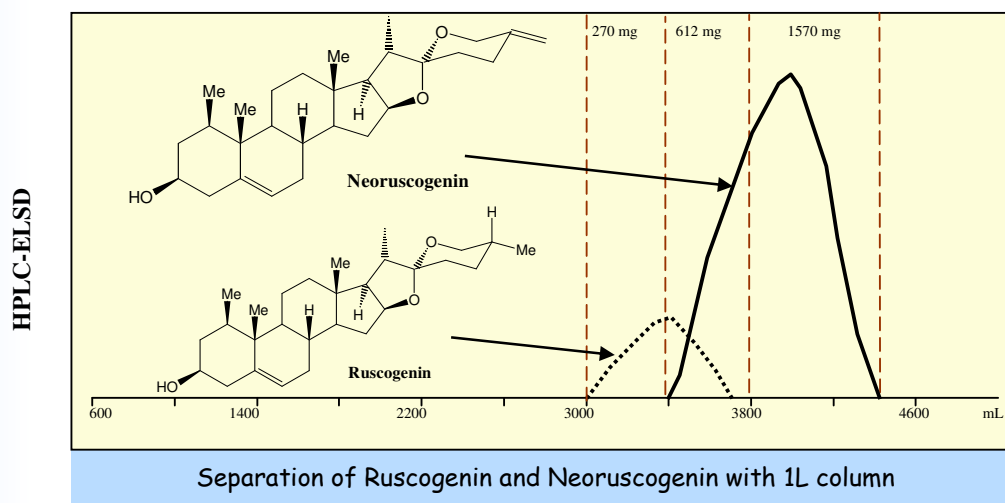
Butcher's broom is an evergreen shrub native to Mediterranean Europe and Africa from the Azores islands, west of Portugal, to Iran in south-western Asia. It has been used in European medicine as a laxative and diuretic agent to treat urinary, gastrointestinal, and reproductive disorders. Today, it is used for disorders involving the venous system, including venous fragility or varicose veins.



Butcher's broom root contains the sapogenin Ruscogenin, standard commission E. Extract, equivalent to 7-11 mg total is the sum of neoruscogenin and ruscogenin obtained after fermentation or acid hydrolysis

The bench scale FCPC® equipped with 1L rotor is used to purify neoruscogenin and ruscogenin from a binary mixture. Detection is done by ELSD and HPLC.

## Results



Parameters	
Flow-rate	20 ml/mn
Rotation speed	900 rpm
Solvent system	Hex/EtOAc/MeOH/W
Quantity injected	2.5 gr

Results	
Separation time	130 mn
Solvent consumption	4,6 L

## Conclusions

The method provides an easy access to both Ruscogenin and Neoruscogenin. The FCPC purification is very well suited for isolating of multi-gram quantities often needed for pharmacological or clinical study.

